

POMOLI E PIASTRE - TOPS AND PLATES

COMPENDIUM 2011

Art. 749/2
Art. 1400/1
Art. 128/1
Art. NEW0049

POMOLI FORGIATI - HAND FORGED POST TOPS



Art. 749/22
Ø 70 mm



Art. 116/A/20
sfera/sphere Ø 55 mm
base Ø 38 mm



Art. 116/A/21
sfera/sphere Ø 40 mm
base Ø 26 mm



Art. 116/A/22
sfera/sphere Ø 40 mm
base Ø 26 mm



Art. 113/9
Ø 75 mm



Art. 113/10
Ø 70 mm



Art. 749/2
Ø 24 mm
H 95 mm



Art. 116/A/17
Ø 72 mm

Art. 116/A/19
Ø 55 mm



Art. 116/A/18
Ø 60 mm



Art. 749/1
Ø 35 mm
H 155 mm

POMOLI STAMPATI STAMPED POST TOPS



Art. 1398/2
 □ 16 × 16 mm
 H 115 mm
 Ø 90 mm



Art. 1399/1
 H 140 mm
 base Ø 25 mm
 Ø 115 mm



Art. 1400/1
 H 100 mm
 base Ø 25 mm
 Ø 160 mm



Art. 1398/1
 H 75 mm
 Ø 120 mm



Art. 1400/2
 H 130 mm
 base Ø 30 mm
 Ø 120 mm



| Cod.art./Art.no. | Sfera/Sphere Ø/dia. | Base Ø/dia. | H |
|------------------|---------------------|-------------|--------|
| 1404/1 | 110 mm | 90 mm | 140 mm |
| 1404/2 | 90 mm | 70 mm | 125 mm |
| 1404/3 | 70 mm | 55 mm | 100 mm |
| 1404/4 | 55 mm | 45 mm | 85 mm |



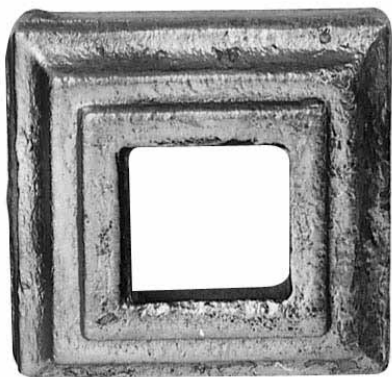
| Cod.art./Art.no. | Sfera/Sphere Ø/dia. | Base | H |
|------------------|---------------------|--------------|--------|
| 1404/5 | 95 mm | 100 × 100 mm | 150 mm |
| 1404/6 | 85 mm | 80 × 80 mm | 120 mm |
| 1404/7 | 70 mm | 60 × 60 mm | 105 mm |
| 1404/8 | 50 mm | 40 × 40 mm | 75 mm |
| 1404/9 | 30 mm | 25 × 25 mm | 45 mm |



| Cod.art./Art.no. | Sfera/Sphere Ø/dia. | Base | H |
|------------------|---------------------|------|--------|
| 128/31 | 10 mm | - | 180 mm |

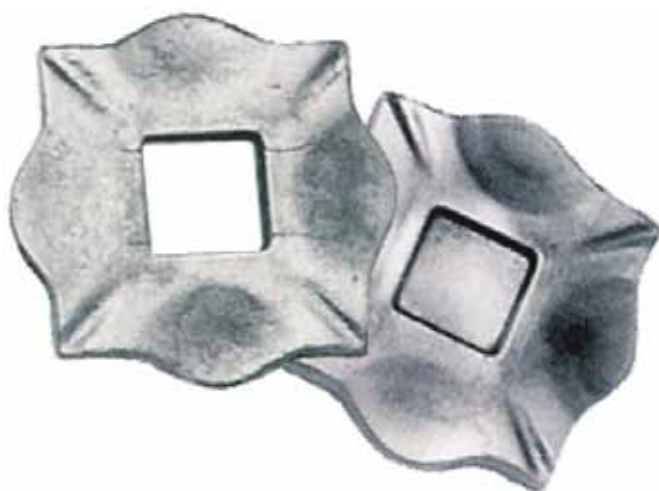


ARTEFERRO



| Lato/Side | Foro/Hole | Cod.art./Art.no. |
|------------|---------------------------|------------------|
| 40 x 40 mm | senza foro/without hole | 819/11 |
| | per/for Φ 12 x 12 mm | 819/8 |
| | per/for Φ 14 x 14 mm | 819/7 |
| | per/for Φ 16 x 16 mm | 819/6 |
| 50 x 50 mm | senza foro/without hole | 819/10 |
| | per/for Φ 16 x 16 mm | 819/5 |
| | per/for Φ 18 x 18 mm | 819/4 |
| | per/for Φ 20 x 20 mm | 819/3 |
| 60 x 60 mm | senza foro/without hole | 819/9 |
| | per/for Φ 25 x 25 mm | 819/2 |
| | per/for Φ 30 x 30 mm | 819/1 |
| 80 x 80 mm | senza foro/without hole | 819/17 |
| | per/for Φ 25 x 25 mm | 819/18 |
| | per/for Φ 30 x 30 mm | 819/15 |
| | per/for Φ 40 x 40 mm | 819/16 |

| Φ esterno External dia. | Foro/Hole | Cod.art./Art.no. |
|---------------------------------|-------------------------|------------------|
| 30 mm | senza foro/without hole | 1408/18 |
| | per/for Φ 12 mm | 1408/21 |
| 40 mm | senza foro/without hole | 1408/17 |
| | per/for Φ 12 mm | 1408/5 |
| | per/for Φ 14 mm | 1408/19 |
| 50 mm | per/for Φ 16 mm | 1408/20 |
| | senza foro/without hole | 1408/16 |
| | per/for Φ 18 mm | 1408/13 |
| 60 mm | per/for Φ 20 mm | 1408/12 |
| | senza foro/without hole | 1408/11 |
| | per/for Φ 25 mm | 1408/15 |
| 80 mm | per/for Φ 30 mm | 1408/7 |
| | senza foro/without hole | 1408/6 |
| | per/for Φ 30 mm | 1408/14 |
| 80 mm | per/for Φ 35 mm | 1408/10 |
| | per/for Φ 40 mm | 1408/9 |
| | per/for Φ 40 mm | 1408/8 |
| | per/for Φ 40 mm | 1408/10 |



Art. 116/A/7
100 x 100 mm
foro/hole
 Φ 30 x 30 mm
spess./thickn. 10 mm

Art. 116/A/6
100 x 100 mm
senza foro
without hole
spess./thickn. 10 mm



ARTEFERRO



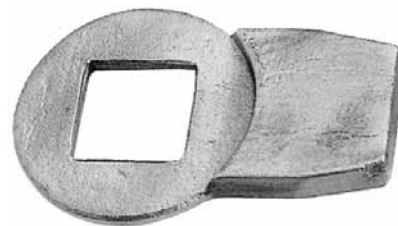
Art. 116/A/1
70 x 70 mm
Foro/Hole
13 x 13 mm
Spess./Thickn. 5 mm



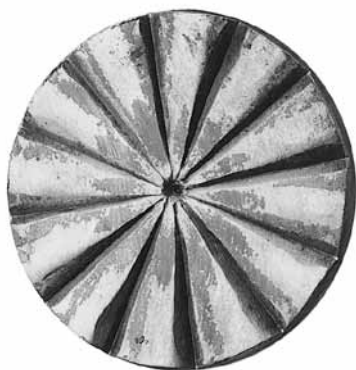
Art. 116/35
Ø 65 mm
Foro/Hole
Ø 15 mm
Spess./Thickn. 8 mm



Art. 1393/7
Foro/Hole Ø 12,5 mm
Spessore/Thickness 10 mm
Ø 68 mm



Art. 609/1
Ø 70 mm
30 ÷ 40 x 8 mm
Foro/Hole
30 x 30 mm



Art. 654/5
Ø 60 mm
Spess./Thickn. 6 mm



Art. 1857/13
Ø 82 mm
Spess./Thickn. 4 mm



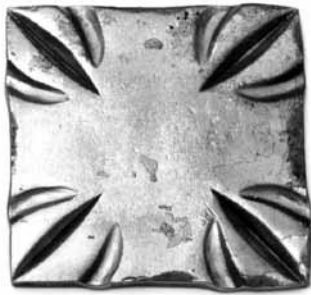
Art. 1857/14
Ø 82 mm
Foro/Hole
Ø 8,5 mm
Spess./Thickn. 4 mm



Art. 1857/15
Ø 82 mm
Foro/Hole
Ø 15 mm
Spess./Thickn. 4 mm
H 10 mm



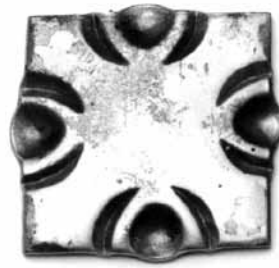
Art. 138/2
Spessore/Thickness 2 mm
5 mm x Ø 60 mm



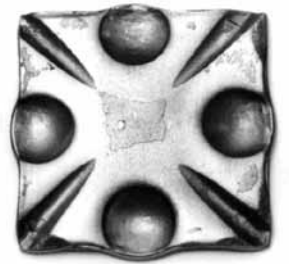
Art. 94/A/3
100 x 100 mm
Spess./Thickn. 8 mm



Art. 94/A/4
80 x 80 mm
Spess./Thickn. 8 mm



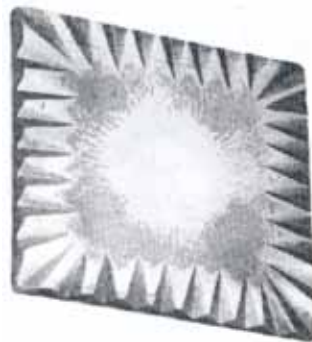
Art. 94/A/5
80 x 80 mm
Spess./Thickn. 8 mm



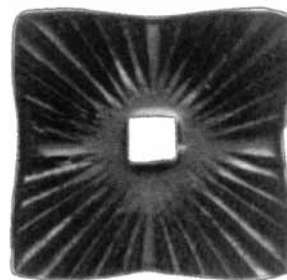
Art. 94/A/6
80 x 80 mm
Spess./Thickn. 8 mm



Art. 147/3
Kit di 4 pezzi per bloccaggio a
pavimento tubi da 40 mm
Kit comprises of base screw and
cover tube dia 40 mm



Art. 181/6
120 x 120 mm
Spess./Thickn. 8 mm



Art. 116/A/2
75 x 75 mm
Foro/Hole
Φ 13 x 13 mm
Spess./Thickn. 5 mm



Art. 1408/1
L 80 x 80 mm
Foro/Hole
Φ 26 x 26 mm
H 18 mm



Art. 1393/3
Ø 75 mm
Spess./Thickn. 20 mm

Art. 1408/2
L 55 x 55 mm
Foro/Hole
Φ 15 x 15 mm
H 12 mm



Art. 802/5
70 x 70 mm
Spess./Thickn. 6 mm



Art. 802/4
100 x 100 mm
Spess./Thickn. 10 mm



ARTEFERRO



Art. NEW0049

∅ 6 mm
H 280 mm
L 130 mm

Art. NEW0050

∅ 6 mm
H 220 mm
L 100 mm



Art. NEW0054

Base 35 mm
∅ 6 mm
H 140 mm
L 130 mm

Art. NEW0055

Base 32 mm
∅ 6 mm
H 110 mm
L 100 mm

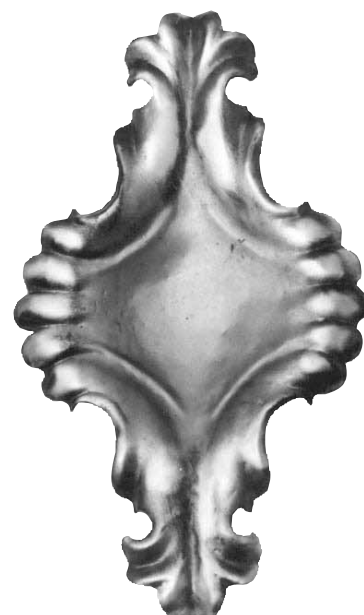


Art. 94/A/7

H 165 mm
L 100 mm

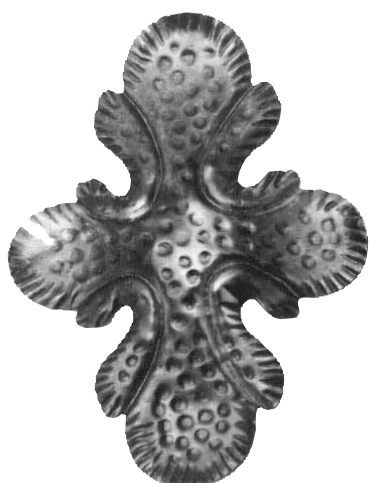
Art. 94/A/8

H 150 mm
L 85 mm



Art. 137/14

H 355 mm
L 130 mm
Spess./Thickn. 1 mm



Art. 137/13

H 190 mm
L 140 mm
Spess./Thickn. 1 mm

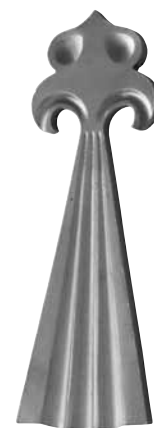


Art. 1470/8

H 300 mm
L 75 mm
Spess./Thickn. 3 mm

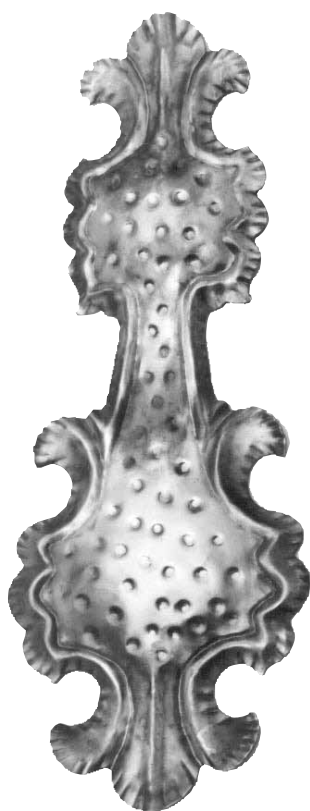
Art. 841/7

H 520 mm
L 75 mm
Spess./Thickn. 3 mm



NEW0051

∅ 8 mm
80 x H 235 mm



Art. 137/12

H 260 mm
L 145 mm
Spess./Thickn. 1 mm



Art. 1470/9

H 220 mm
L 75 mm
Spess./Thickn. 3 mm



Art. 701/10

H 280 mm
L 65 mm



NEW0052

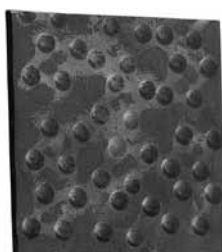
∅ 8 mm
65 x H 220 mm



Art. 1857/5
100 × 100 mm
Spess./Thickn. 8 mm



Art. 1857/7
100 × 100 mm
Spess./Thickn. 8 mm



Art. 1408/4
160 × 160 mm
Spess./Thickn. 10 mm



Art. 1408/3
Ø 160 mm
Spess./Thickn. 10 mm

Art. 1857/6
120 × 120 mm
Spess./Thickn. 8 mm

Art. 1857/8
120 × 120 mm
Spess./Thickn. 8 mm



Art. 1860/6
Ø 414 mm
H 44 mm
Spess./Thickn. 4 mm



Art. 1860/1
Ø 580 mm
H 45 mm
Spess./Thickn. 6 mm



Art. 1860/4
Ø 360 mm
H 31,5 mm
Spess./Thickn. 3 mm



Art. 1861/21
base 143 × 143 mm
H 14 mm
Spess./Thickn. 6 mm

Art. 1860/2
Ø 680 mm
H 50 mm
Spess./Thickn. 8 mm

Art. 1860/5
Ø 415 mm
H 33 mm
Spess./Thickn. 4 mm

Art. 1861/22
base 200 × 200 mm
H 19 mm
Spess./Thickn. 6 mm

Art. 1860/3
Ø 780 mm
H 55 mm
Spess./Thickn. 8 mm



| Cod.art./Art.no. | Ø/diameter | H | Spessore/Thickness |
|------------------|------------|-------|--------------------|
| 1861/1 | 170 mm | 20 mm | 3 mm |
| 1861/2 | 200 mm | 25 mm | 4 mm |
| 1861/3 | 220 mm | 32 mm | 4 mm |
| 1861/4 | 240 mm | 25 mm | 6 mm |
| 1861/5 | 260 mm | 28 mm | 6 mm |
| 1861/6 | 290 mm | 31 mm | 6 mm |
| 1861/7 | 320 mm | 32 mm | 6 mm |
| 1861/8 | 370 mm | 38 mm | 5 mm |
| 1861/9 | 500 mm | 28 mm | 5 mm |

| Cod.art./Art.no. | Ø/diameter | H | Spessore/Thickness |
|------------------|------------|-------|--------------------|
| 1861/10 | 120 mm | 13 mm | 3 mm |
| 1861/11 | 140 mm | 13 mm | 3 mm |
| 1861/12 | 160 mm | 16 mm | 4 mm |
| 1861/13 | 185 mm | 21 mm | 3 mm |
| 1861/14 | 200 mm | 20 mm | 4 mm |
| 1861/15 | 230 mm | 35 mm | 6 mm |
| 1861/16 | 265 mm | 30 mm | 3,5 mm |
| 1861/17 | 295 mm | 40 mm | 6 mm |
| 1861/18 | 340 mm | 35 mm | 6 mm |
| 1861/19 | 380 mm | 35 mm | 6 mm |
| 1861/20 | 480 mm | 40 mm | 6 mm |